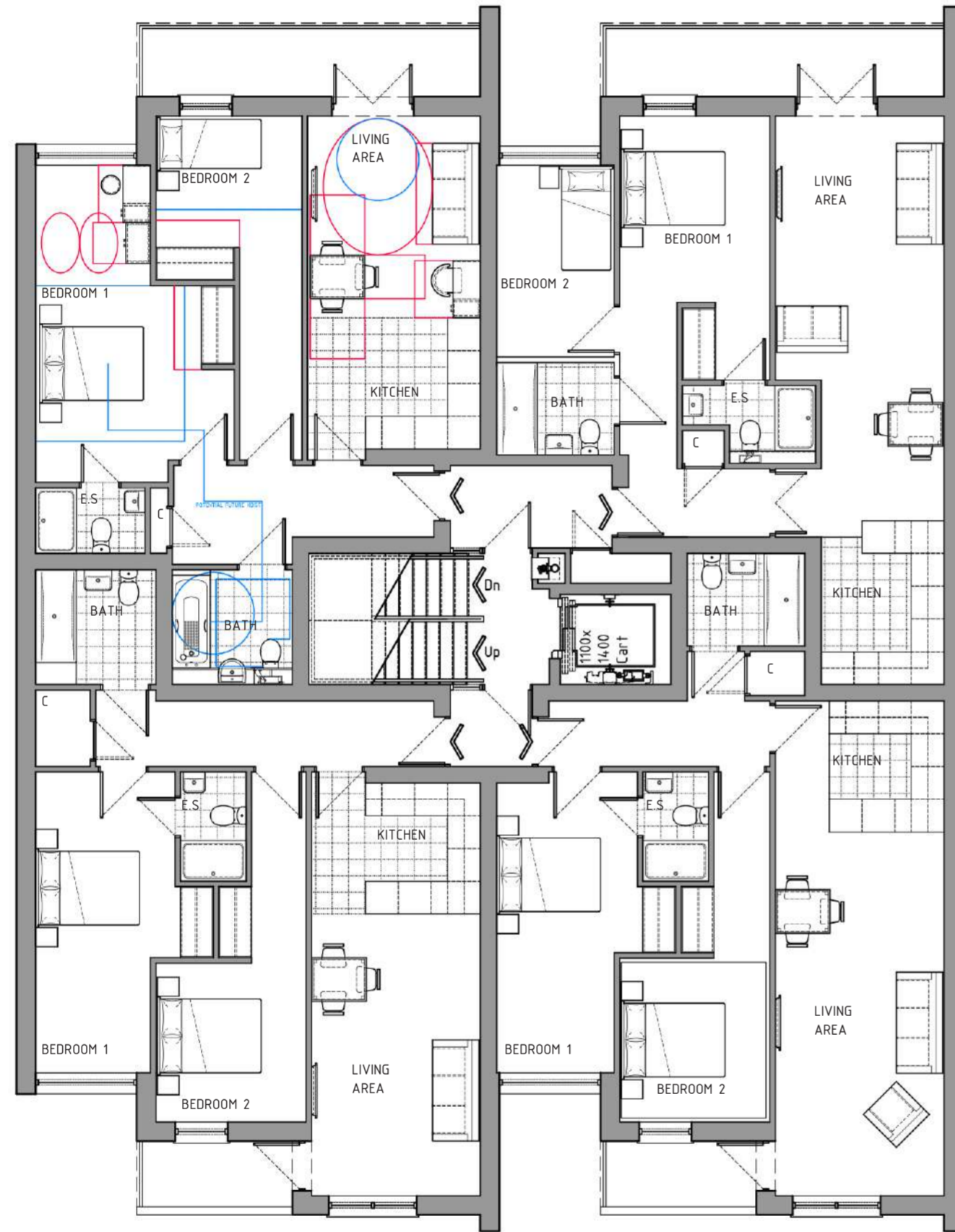


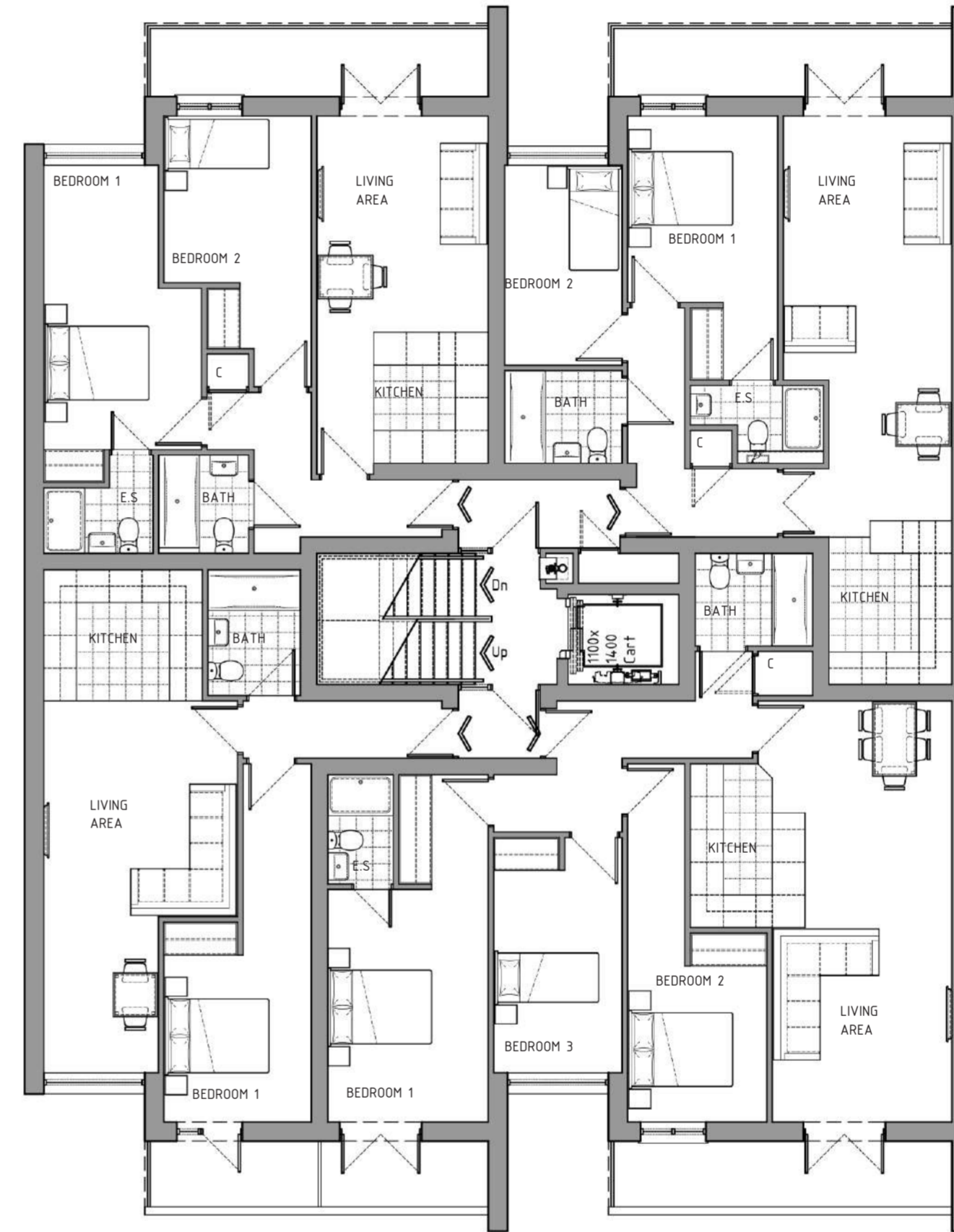
177 LONDON ROAD, SOUTHEND-ON-SEA

MIXED-USE SCHEME: 16NO. RESIDENTIAL APARTMENTS + 2NO. COMMERCIAL UNITS.

SCALE BAR 1:100



AS PROPOSED: TYPICAL FLOOR PLAN



AS PROPOSED: FOURTH FLOOR PLAN

GENERAL NOTES

The copyright in all designs, drawings, schedules, specifications and any other documentation prepared by DAP Architecture Ltd. in relation to this project shall remain the property of DAP Architecture Ltd. and must not be reissued, loaned or copied without prior written consent.

Do not scale from this drawing, use figured dimensions only.

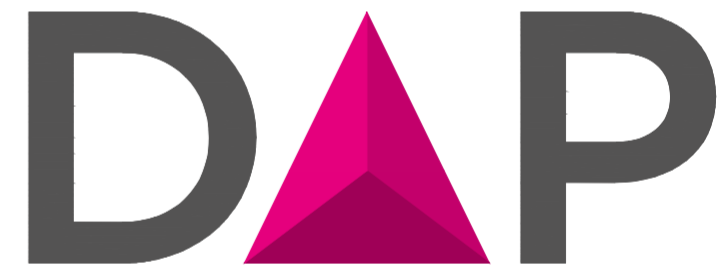
Prefer larger scale drawings.

All dimensions are in millimeters (mm) unless otherwise noted.

Check all relevant dimensions, lines and levels on site before proceeding with the work.

This drawing is to be read in conjunction with all Architect's drawings, schedules and specifications, and all relevant consultants' and/or specialists' information relating to the project. Refer all discrepancies to DAP Architecture Ltd.

REV.	DESCRIPTION	DATE
------	-------------	------



ARCHITECTURE LTD

PROJECT
RESIDENTIAL DEVELOPMENT

DRAWING
AS PROPOSED
FLOOR PLANS

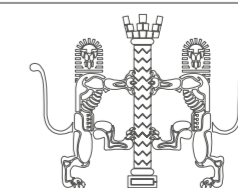
CLIENT
GREEN TURTLE CAY LTD

ADDRESS
177 LONDON RD
SOUTHEND-ON-SEA
SS1 1PW

DATE 12.04.17	SCALE 1:100 @ A2	DRAWN BY LC	CHECKED BY DAP
------------------	---------------------	----------------	-------------------

PROJECT No. 703.207.01	DWG No.	REVISION
----------------------------------	---------	----------

ISSUE STATUS
PLANNING



a. 3 + 5 Hospital Approach
The Millars
Chelmsford
ESSEX, CM1 7FA
e. studio@daparchitecture.co.uk
t. (0844) 854 9007
w. www.daparchitecture.co.uk

CHELMSFORD

LONDON

BIRMINGHAM